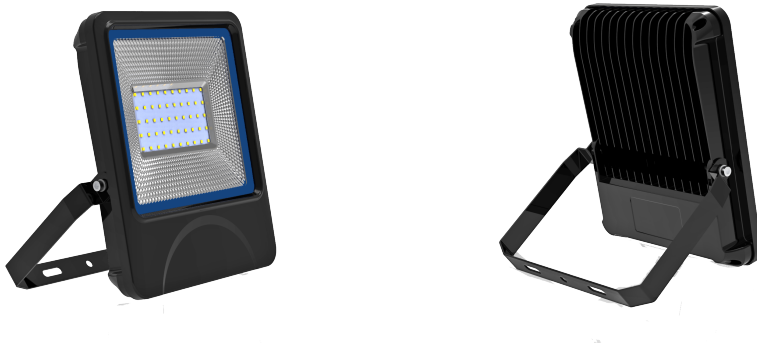


LED Floodlighting Picture:

FL01-0010/20/30/50-NA-CCRA

FL01-0100/150/200-NA-CCRA



Description:

This flood light series saves up to 50% in energy costs when compared to a high intensity discharge lamp, and it also reduces maintenance costs and carbon emission. The flood light is combined with Super bright SMD LED as lighting sources: efficiency, energy saving and Eco_friendly.

Features:

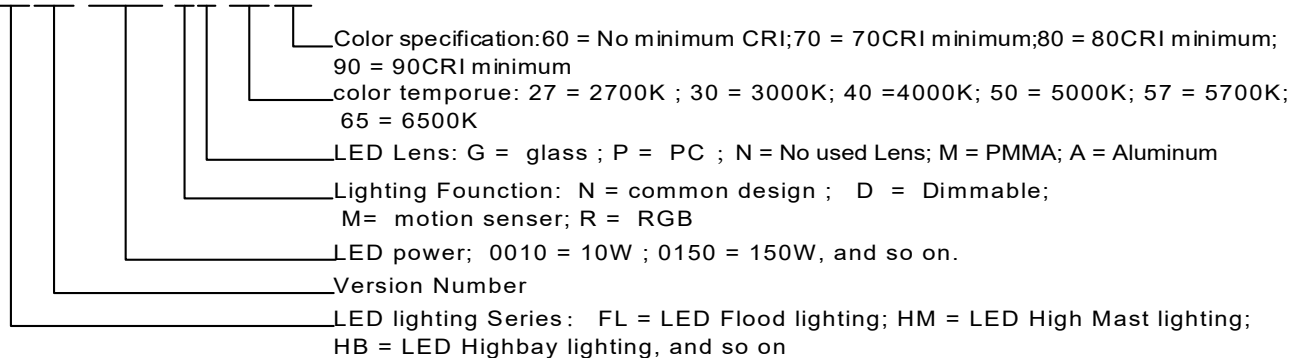
- . Waterproof design IP 66, easy to assemble;
- . Die-casting aluminum thermal alloy lamp body, high toughened glass cover, solid and durable, corrosion-proof;
- . High efficiency thermal management, LEDs and power supply work in low temperature, and high stability of continuous operating;
- . Instant on /off, no flicker and glare, high CRI;
- . Compact appearance, easy to install and transport;
- . Includes a power cord with a length of 19.5 +/- 2 inches.

Technical parameters:

SKU	Voltage / Frequency	Power	Lumen Efficiency	LED Number /Type	Color Temperature	Beam (angle°)	CRI	PF
FL01-0010-NA-CCRA	100-277Vac 50/60HZ	10W	120Lm/W	12PCS/3030	2700K~6500K	120°	> 80	≥ 0.9
FL01-0020-NA-CCRA	100-277Vac 50/60HZ	20W	120Lm/W	25PCS/3030	2700K~6500K	120°	> 80	≥ 0.9
FL01-0030-NA-CCRA	100-277Vac 50/60HZ	30W	120Lm/W	40PCS/3030	2700K~6500K	120°	> 80	≥ 0.9
FL01-0050-NA-CCRA	100-277Vac 50/60HZ	50W	130Lm/W	70PCS/3030	2700K~6500K	120°	> 80	≥ 0.9
FL01-0100-NA-CCRA	100-277Vac 50/60HZ	100W	130Lm/W	140PCS/3030	2700K~6500K	120°	> 80	≥ 0.9
FL01-0150-NA-CCRA	100-277Vac 50/60HZ	150W	140Lm/W	210PCS/3030	2700K~6500K	120°	> 80	≥ 0.9
FL01-0200-NA-CCRA	100-277Vac 50/60HZ	200W	140Lm/W	280PCS/3030	2700K~6500K	120°	> 80	≥ 0.9

Code format:

FLNN-YYYY-XX-CCRA



*Note: when both materials are used as lenses on lamps at the same time, the lens with the luminescent Angle can be determined internally as the model code.

Application:

Mainly applied in outdoor flood lighting, building decoration, industry, sports centers, outdoor stadiums, ports, parking lots, and roads if there is street a light distribution system.

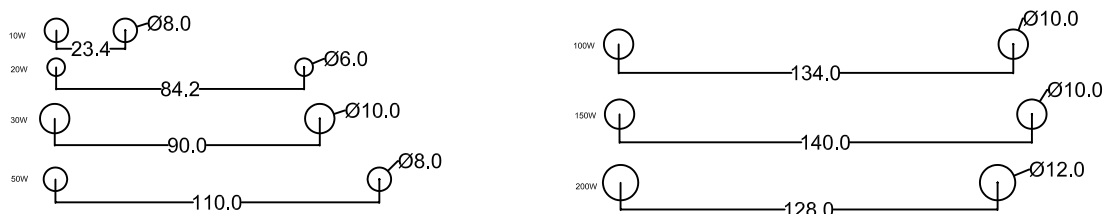




The image displays technical drawings for seven different LED light fixture models, arranged in a grid. Each model is shown from three perspectives: front, side, and top, with dimensions in millimeters.

- 10W:** Front view shows a square fixture with a central LED array. Side view shows a depth of 43.82 mm. Top view shows a width of 107.00 mm and a height of 149.80 mm.
- 20W:** Front view shows a square fixture with a central LED array. Side view shows a depth of 43.42 mm. Top view shows a width of 146.00 mm and a height of 223.40 mm.
- 30W:** Front view shows a square fixture with a central LED array. Side view shows a depth of 46.57 mm. Top view shows a width of 184.00 mm and a height of 259.40 mm.
- 50W:** Front view shows a square fixture with a central LED array. Side view shows a depth of 48.00 mm. Top view shows a width of 242.00 mm and a height of 329.80 mm.
- 100W:** Front view shows a square fixture with a central LED array. Side view shows a depth of 52.50 mm. Top view shows a width of 285.00 mm and a height of 349.80 mm.
- 150W:** Front view shows a square fixture with a central LED array. Side view shows a depth of 57.70 mm. Top view shows a width of 319.80 mm and a height of 409.80 mm.
- 200W:** Front view shows a square fixture with a central LED array. Side view shows a depth of 64.50 mm. Top view shows a width of 354.00 mm and a height of 464.50 mm.

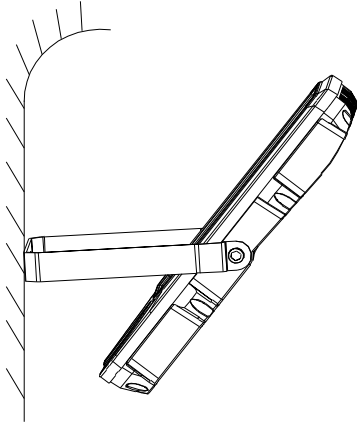
1. surface mounting



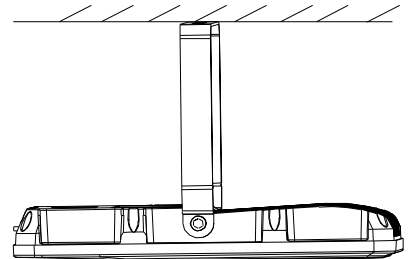
Tel: +86-755-27403289 Email: Rachel@strongeaglelighting.com
Web: www.strongeaglelighting.com
Add: Room 7E, Qihang Building, No. 5059, Songbai Road, Matian Street, Guangming New District, Shenzhen, China

Surface mounting

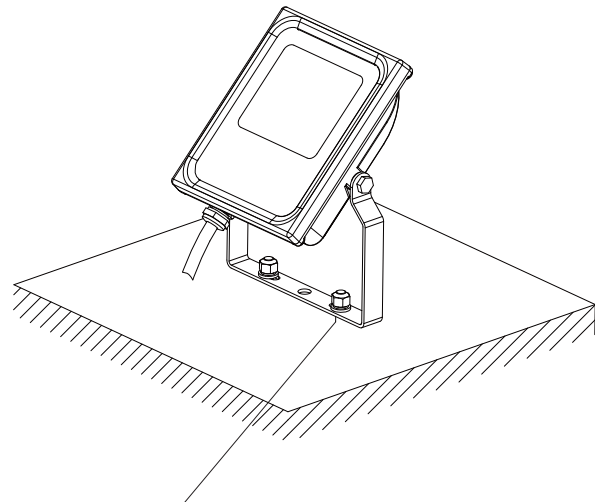
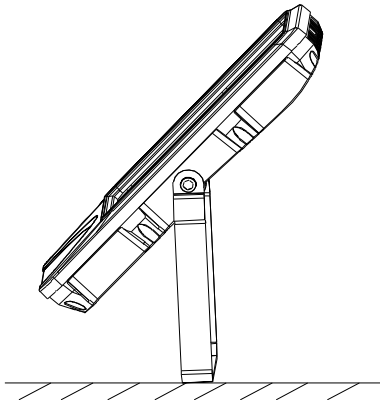
sidewall installation



ceiling installation



pedestal installation



Step2: Install lamp on expansion bolt

Step3: Install flat gasket, spring washer and nut to fasten bracket and expansion bolts

Installation requirement:

1. Please prepare two sets of bolts to install the light;
2. Power off before installation;
3. Make sure the installed surface can endure the weight of light, and fix the light on the installed surface securely(according to installation diagram);
4. Connect light wire to power wire, seal the joint with insulation.

Packaging:

SKU	N.W.(±0.2)	G.W.(± 5%)	Inner Box Dimension	Qty/ctn	Outer Carton Dimension
FL01-0010-XX-CCRA	0.52KG	17.5KG	180mmX110mmX53mm	30PCS	570mmX375mmX175mm
FL01-0020-XX-CCRA	0.90KG	19.0KG	200mmX160mmX58mm	20PCS	600mmX335mmX215mm
FL01-0030-XX-CCRA	1.30KG	19.5KG	235mmX200mmX62mm	15PCS	480mmX370mmX225mm
FL01-0050-XX-CCRA	2.10KG	22.0KG	300mmX252.5mmX62mm	10PCS	525mmX370mmX315mm
FL01-0100-XX-CCRA	3.50KG	18.5KG	365mmX300mmX74mm	5PCS	480mmX315mmX390mm
FL01-0150-XX-CCRA	4.70KG	20.0KG	435mmX335mmX75mm	4PCS	450mmX350mmX320mm
FL01-0200-XX-CCRA	6.00KG	20.0KG	465mmX355mmX70mm	3PCS	480mmX370mmX225mm

! Notice:

- 1.Please read the specification first, to make sure the service environment matches the conditions in the specification before using;
- 2.Please confirm input voltage, frequency before using;
3. The lamp must be installed by professionals;
4. The lamp can't be used if the power wire, housing are damaged;
5. The lamp can't be maintained by non-professionals;
- 6.If the exterior flexible cable or wire is damaged, it must be exchanged by the supplier, its agent or other relevant qualified personnel to avoid dangers;
- 7.Using environment: -20℃-40℃.